

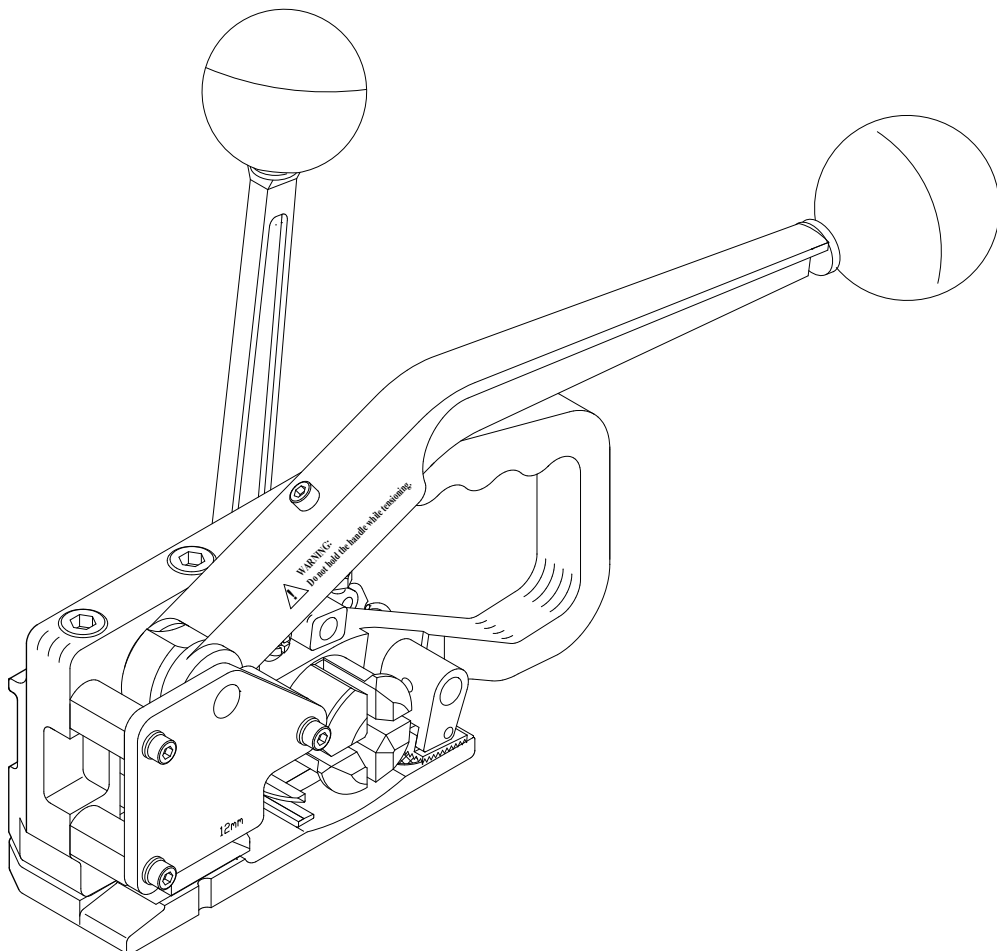
Made in Taiwan

**H-44** (For P.P. / PET Straps)

**OPERATION MANUAL**

**&**

**SPARE PARTS LIST**

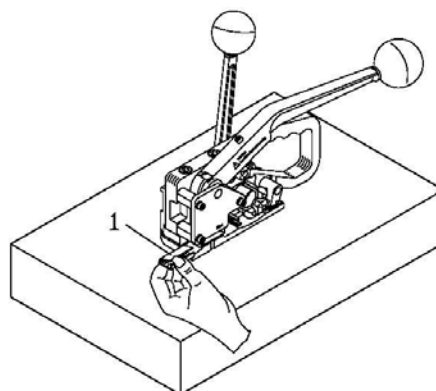


# OPERATION INSTRUCTIONS FOR H-44

Straighten the strap first.

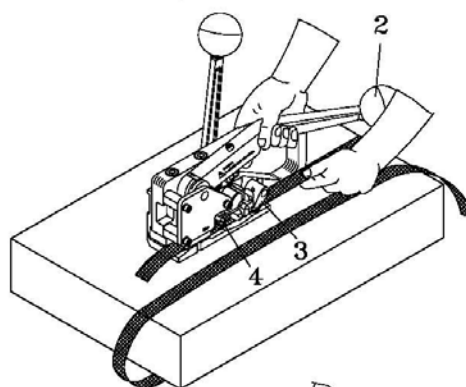
## 1. Inserting the seal

Using the left hand to insert seal (No. 1) into the tool from the rear side until it hits the strap stop.



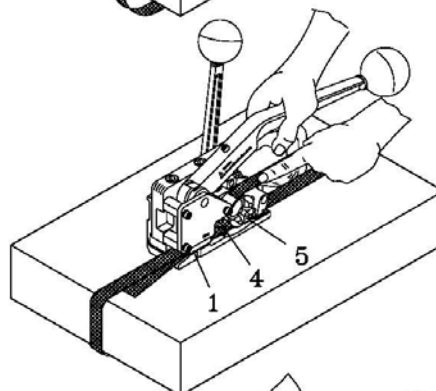
## 2. Feeding the strap around the package. Then insert the lower strap

Feed strap end around the package. Press Sealing Lever (No. 2) down to the bottom and insert the strap end through Gripper (No. 3) and Seal (No. 1). [The strap should go under the cutter (No.4)] Then, release Sealing Lever (No. 2) so that it comes back to its original position.



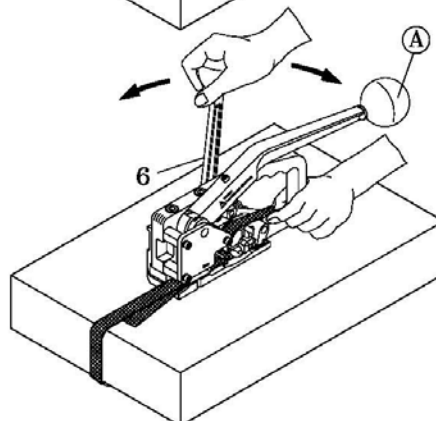
## 3. Inserting the upper strap

Insert the other side of strap (from dispenser) through the Seal (No.1) (above the strap which is just inserted in the seal as per point 2), the blades of cutting set (No. 4) and the Windlass (No. 5). Then, pull the strap straightly.



## 4. Tensioning the strap

Move Tension Handle (No. 6) back and forth until the strap is tensioned to the desired amount of tension.

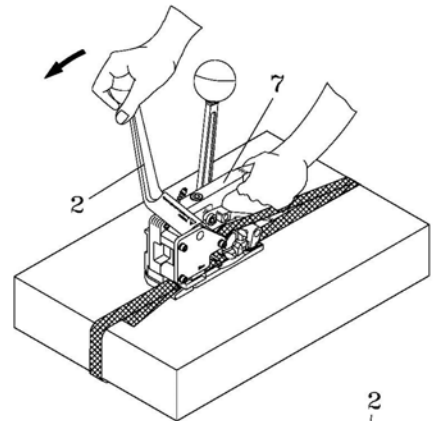


### WARNING:

Do not hold the handle ① while tensioning.

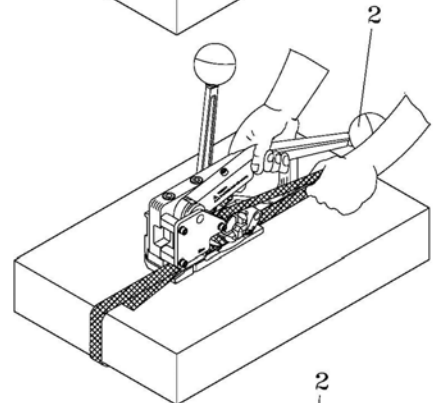
## 5. Sealing the strap

Hold the Body (No. 7) and use the other hand to pull Sealing Lever (No. 2) forward to the stop.



## 6. Cutting off the strap

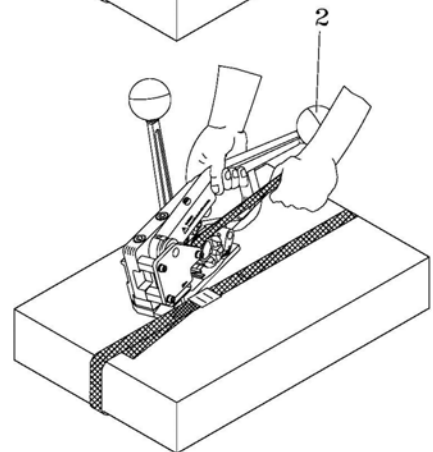
Press Sealing Lever (No. 2) down to the bottom to cut the strap.



## 7. Removing the tool

Remain the sealing lever as point 6 and remove the tool from the strap to the right.

The strapping procedure is completed.



### Caution:

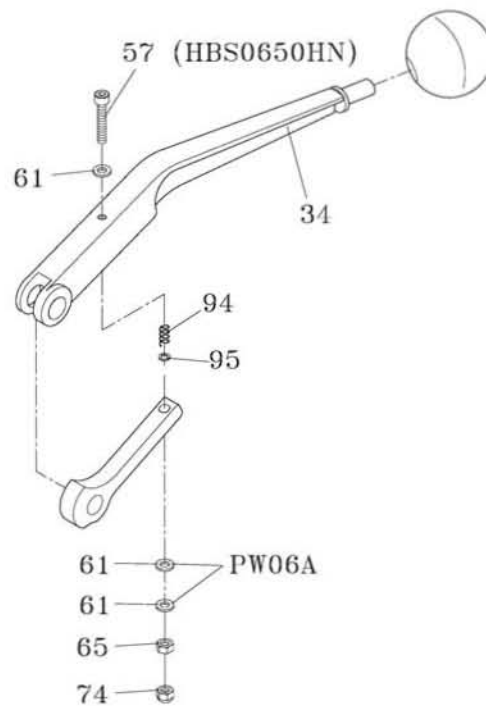
**The tension force is calculated by the applied manual force multiplied by 10.**

**Thus the tension force is  $20\text{kg} * 10 = 200\text{kg}$  if the applied manual force is 20kg at the tension lever.**

**Too much manual force at the tension lever would make some components worn easily.**

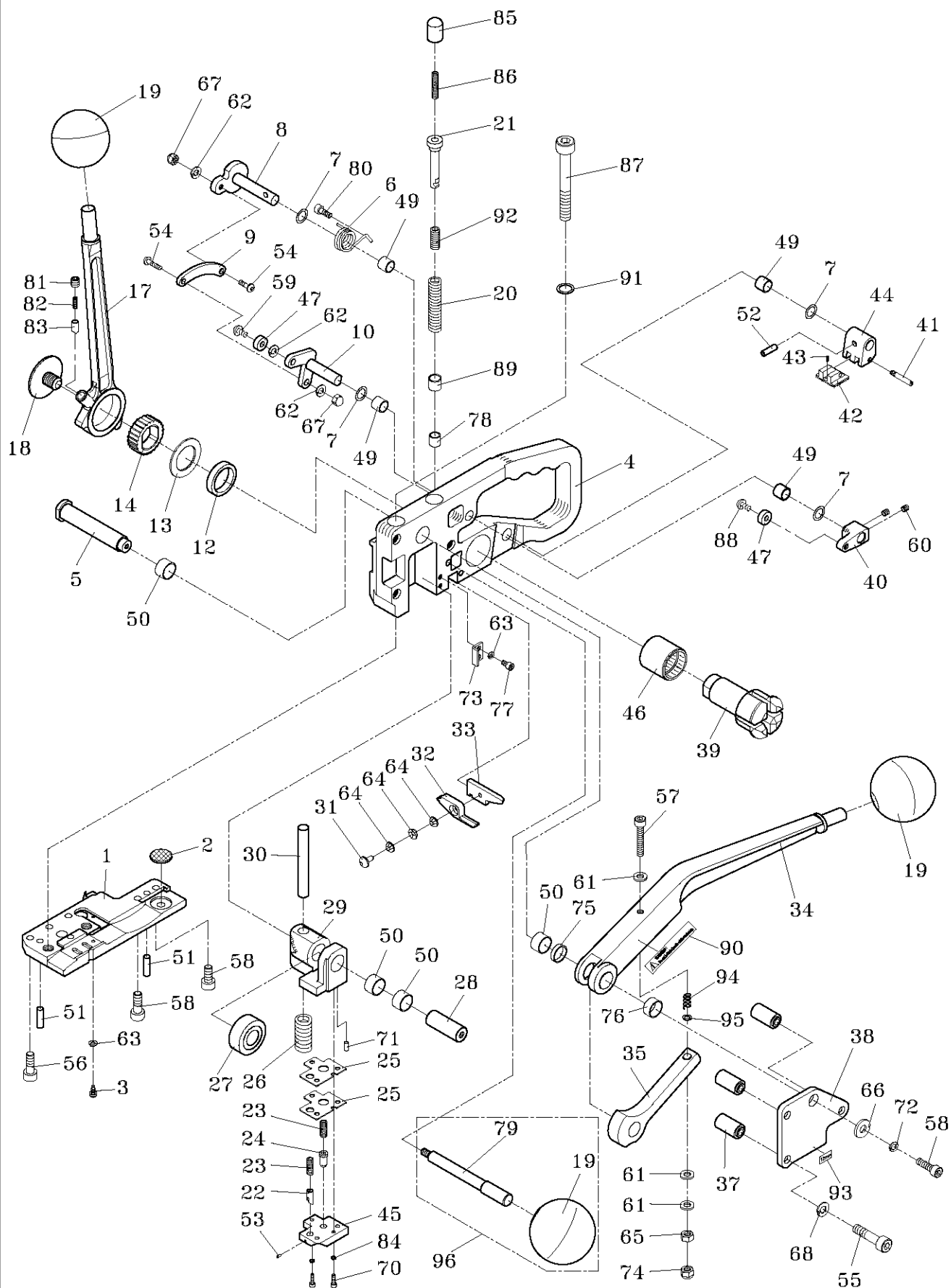
**The available maximum tension force:    For H-44-12 (for 12mm strap) 200kg  
   For H-44-16 (for 16mm strap) 300kg**

**If sealing efficiency is not enough, please adjust 65 and 74 upwards.  
(NOTE: Do not adjust 65 and 74 more than 2mm.)**



# COMBINATION TOOL FOR PLASTIC STRAPPING

## H-44 12mm , 16 mm



| REF. NO. | PART NO.  | DESCRIPTION         | Q'TY | REF. NO. | PART NO.   | DESCRIPTION             | Q'TY |
|----------|-----------|---------------------|------|----------|------------|-------------------------|------|
| 1        | H44-10012 | Base (For 16mm)     | 1    | 49       | MB1010     | Metal Bushing, 1010     | 4    |
|          | H44-10013 | Base (For 12mm)     | 1    | 50       | MB1510     | Metal Bushing, 1510     | 4    |
| 2        | H44-10020 | Base Plug           | 1    | 51       | SP0620     | Spring Pin, 6x20        | 2    |
| 3        | H44-10030 | Screw               | 1    | 52       | SPS0516    | Spring Pin, 5x16        | 1    |
| 4        | H44-10041 | Housing             | 1    | 53       | SP0204     | Spring Pin, 2x4         | 1    |
| 5        | H44-10050 | Shaft               | 1    | 54       | H44-10540  | Screw, M5x15            | 2    |
| 6        | H44-10061 | Spring              | 1    | 55       | HBS0850HN  | HBS, M8x50 (H)(N)       | 3    |
| 7        | H44-10070 | Washer              | 4    | 56       | HBS0620N   | HBS, M6x20N             | 3    |
| 8        | H44-10080 | Shaft               | 1    | 57       | HBS0650HN  | HBS, M6x50 (H)(N)       | 1    |
| 9        | H44-10090 | Connector           | 1    | 58       | HBS0616N   | HBS, M6x16 (N)          | 3    |
| 10       | H44-10100 | Lever               | 1    | 59       | THS0510    | THS, M5x10              | 1    |
| 12       | H44-10120 | Bushing             | 1    | 60       | HSS0510G   | HSS, M5x10 (G)          | 2    |
| 13       | H44-10131 | Washer              | 1    | 61       | PW06A      | PW, M6 (A)              | 3    |
| 14       | H44-10141 | Ratchet Wheel       | 1    | 62       | SW05       | SW, M5                  | 3    |
| 17       | H44-10171 | Tension Handle      | 1    | 63       | SW04       | SW, M4                  | 1    |
| 18       | H44-10181 | Side Plate          | 1    | 64       | DS04       | DS, 0410                | 3    |
| 19       | H54-021   | Knob                | 2    | 65       | HN06       | HN, M6                  | 1    |
|          | H54-021   | Knob (Option)       | 1    | 66       | PW06C      | PW, M6 (C)              | 1    |
| 20       | H44-10200 | Spring              | 1    | 67       | CAP05      | CAP, M5                 | 2    |
| 21       | H44-10211 | Rod Bar             | 1    | 68       | SW08       | SW, M8                  | 3    |
| 22       | H44-10221 | Seal Stop Pin Front | 1    | 70       | HBS0310    | HBS, M3x10              | 2    |
| 23       | H44-10230 | Spring              | 2    | 71       | H44-10710  | Lock Pin, 4x8           | 2    |
| 24       | H44-10240 | Seal Retainer       | 1    | 72       | SW06       | SW, M6                  | 1    |
|          |           | (For 16mm)          |      | 73       | H44-10730  | Stopper                 | 1    |
|          | H44-10241 | Seal Retainer       | 1    | 74       | CAP06      | CAP, M6                 | 1    |
|          |           | (For 12mm)          |      | 75       | MB1504     | Metal Bushing, 1504     | 1    |
| 25       | H44-10250 | Shim                | 2    | 76       | MB1508     | Metal Bushing, 15x7.8   | 1    |
| 26       | H44-10260 | Spring              | 1    | 77       | HBS0408N   | HBS, M4x8 (N)           | 1    |
| 27       | H44-10270 | Pressure Roller     | 1    | 78       | MB0808     | Metal Bushing, 0808     | 1    |
| 28       | H44-10280 | Shaft               | 1    | 79       | H44-10790  | Horizontal Handle       | 1    |
| 29       | H44-10290 | Punch Base          | 1    |          | (Option)   |                         |      |
|          |           | (For 16mm)          |      | 80       | HBS0412N   | HBS, M4x12 (N)          | 1    |
|          | H44-10291 | Punch Base          | 1    | 81       | HSS0808    | HSS, M8x8               | 1    |
|          |           | (For 12mm)          |      | 82       | H44-10820  | Ratchet Spring          | 1    |
| 30       | H44-10300 | Pillar              | 1    | 83       | H44-10830  | Ratchet Stop            | 1    |
| 31       | H44-10310 | Bolt                | 1    | 84       | SW03       | SW, M3                  | 2    |
| 32       | H44-10320 | Lower Cutter        | 1    | 85       | H44-10850  | Rod Head                | 1    |
| 33       | H44-10330 | Upper Cutter        | 1    | 86       | H44-10860  | Spring                  | 1    |
| 34       | H44-10340 | Sealing Lever       | 1    | 87       | HBS10100HN | HBS, M10x100 (H)(N)     | 2    |
| 35       | H44-10350 | Cam                 | 1    | 88       | THS0512    | THS, M5x12              | 1    |
|          |           |                     |      | 89       | MB1410     | Metal Bushing, 1410     | 1    |
| 37       | H44-10370 | Spacer              | 3    | 90       | LA-50563   | Warning Label           | 1    |
| 38       | H44-10380 | Cover               | 1    | 91       | H44-10910  | Washer                  | 2    |
| 39       | H44-10391 | Windlass            | 1    | 92       | H44-10920  | Spring                  | 1    |
| 40       | H44-10400 | Releasing Lever     | 1    | 93       | LA-50562   | Label (For 16mm)        | 1    |
| 41       | H21-019   | Gripper Screw       | 1    |          | LA-50560   | Label (For 12mm)        | 1    |
| 42       | H23-018   | Gripper Plate       | 1    | 94       | H44-10940  | Spring                  | 1    |
| 43       | H21-017   | Gripper Spring      | 1    | 95       | H44-10950  | Washer                  | 1    |
| 44       | H44-10440 | Gripper             | 1    | 96       | H44-10960  | Horizontal Handle Ass'y | 1    |
| 45       | H44-10450 | Punch (For 16mm)    | 1    |          | (Option)   |                         |      |
|          | H44-10451 | Punch (For 12mm)    | 1    |          |            |                         |      |
| 46       | BRFCB2530 | Bearing, FCB2530    | 1    |          |            |                         |      |
| 47       | BR605ZZ   | Bearing, 605ZZ      | 2    |          |            |                         |      |

\* PLEASE ORDER PARTS BY PARTS NO.,DESCRIPTION AND Q'TY.